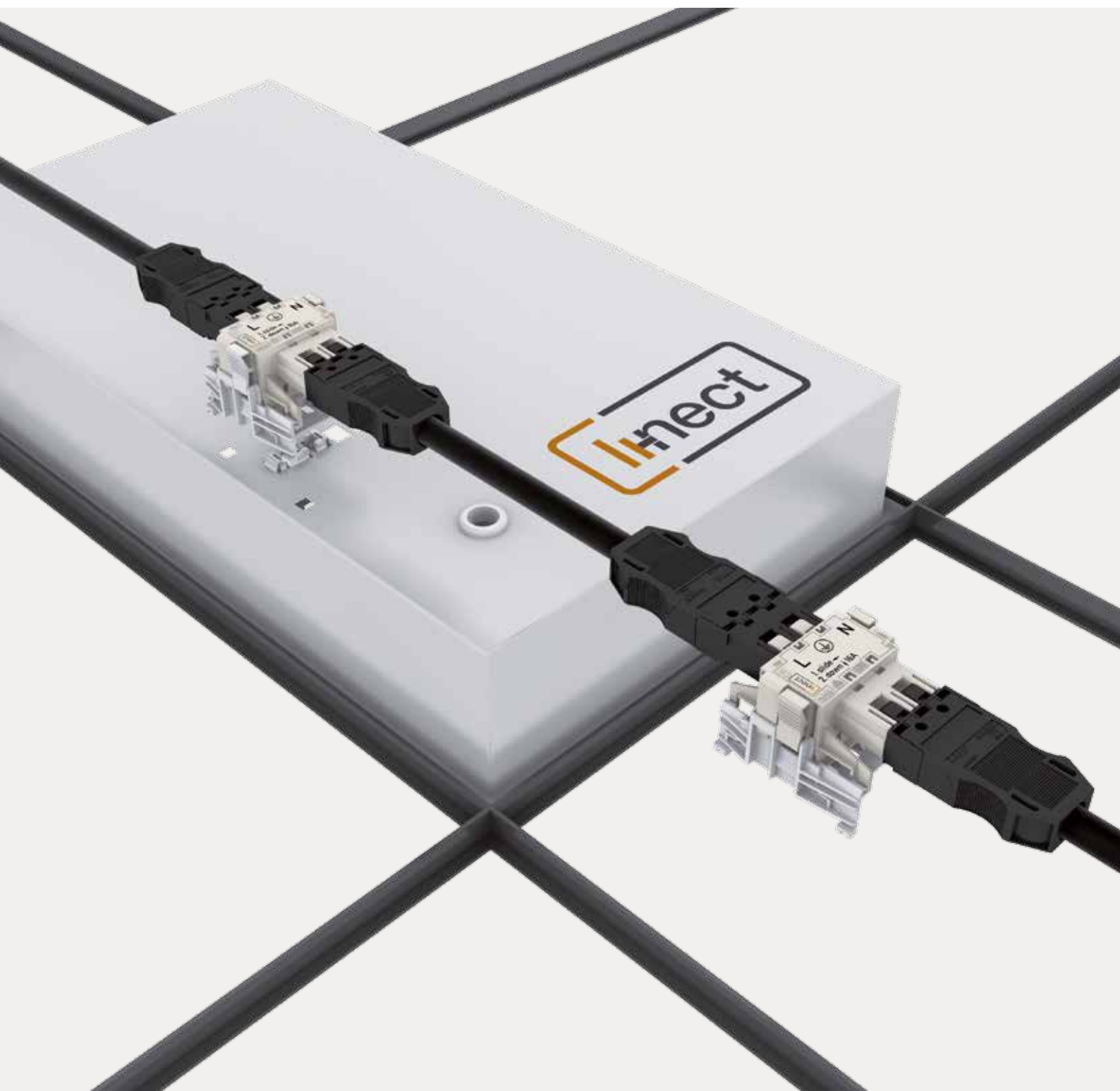
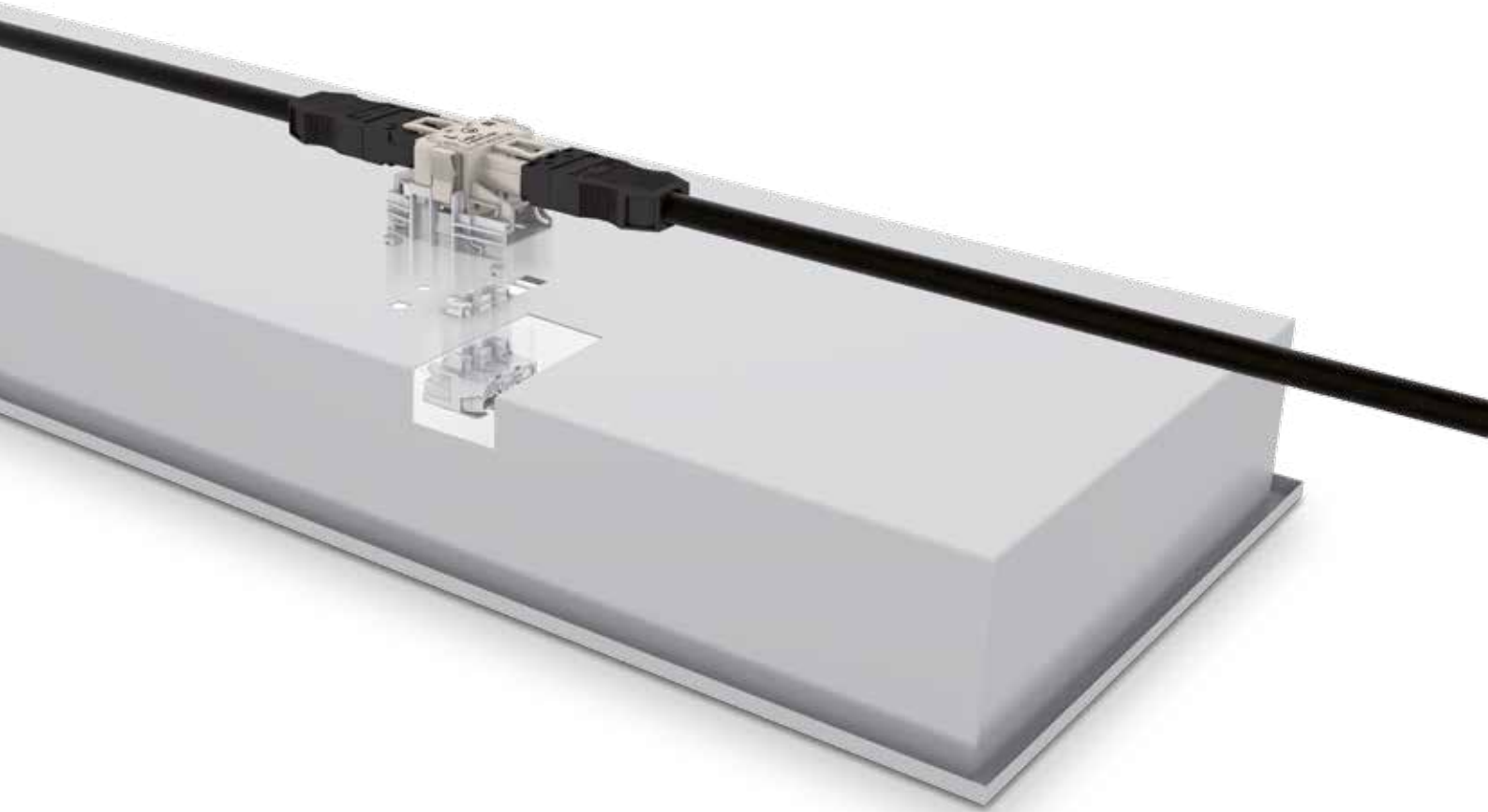


The **WINSTA**® Connection System for Linect® Lights



PLUGGABLE ELECTRICAL INSTALLATION OR CONVENTIONAL WIRING?



Linect® DOES IT ALL!

Modern Lights Need Modern, Pluggable Connections

The modern connection system for lighting installation has a name – Linect®. Lights with a Linect® interface provide connections for both conventional field-wiring terminal blocks and pluggable connectors – regardless of the manufacturer.

Modern, pluggable electrical installation with Linect® enables fast and easy installation of recessed luminaires with various pluggable connector systems. As lighting manufacturers, planners and electricians, you will benefit from Linect® – the universal light connection system.



linect® lights are available internationally.
 Prominent lighting manufacturers
 offering Linect® lights include:



ES-SYSTEM

FAGERHULT



LITELICHT



REGIOLUX



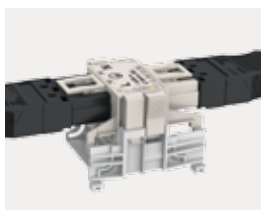
RIDI

siteco
 AN OSRAM BUSINESS

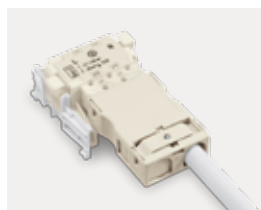
THORN
 Lighting people and places



Three Connection Types:



Pluggable installation
 with WINSTA®



Conventional installation
 via pluggable light
 connection



Conventional installation
 directly at the lighting
 connector

For more information,
 visit: www.linect.com



the light connection system



© goodluz/Shutterstock.com

PLUGGABLE ELECTRICAL INSTALLATIONS...

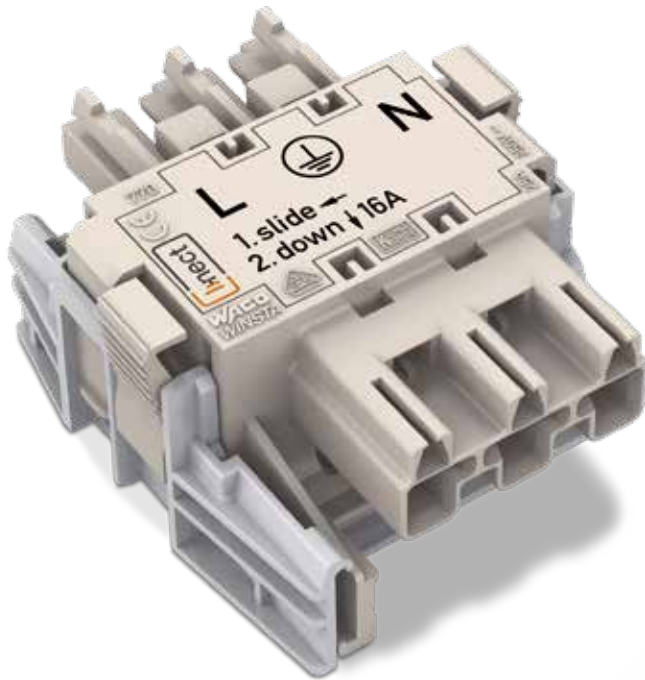
... For Innovative Planers!

The open interface of the Linect® connection system provides host of advantages:
Greater freedom for planning and enhanced planning security for projects using compatible Linect® components – from project conception and bidding to fast installation.



WHY WAGO FOR Linect® LIGHTS?

Future-Proof System Design



Enjoy the following benefits:

- Freely choose an installation system (conventional or pluggable) thanks to compatibility with all manufacturers
- Free choice of Linect® lights, regardless of their connection type or make
- Simplified bidding thanks to separate bids for light and cable installation

» My last project was one of the easiest – from planning to procurement! «





PLUGGABLE ELECTRICAL INSTALLATIONS...

... Ensure On-Time Completion and Eliminate Errors!

Three Easy Steps to Error-Free Connections:



Align connector with the square cutouts.



Move connector toward the square cutouts until it is locked in position.



Push connector down until fully engaged – done!



WHY WAGO FOR Linect® LIGHTS?

Maximum Installation Reliability

The universal Linect® Connection System greatly simplifies on-site electrical installations.

Enjoy the following benefits:

- Plug-and-play connections for fast installation of Linect® lights
- Linect® lights are compatible with all connection types: conventional and pluggable
- Assembly is just as fast as disassembly – even during operation

» *Plug-and-play connections ensure my installations are error-free and done faster than ever before!* «

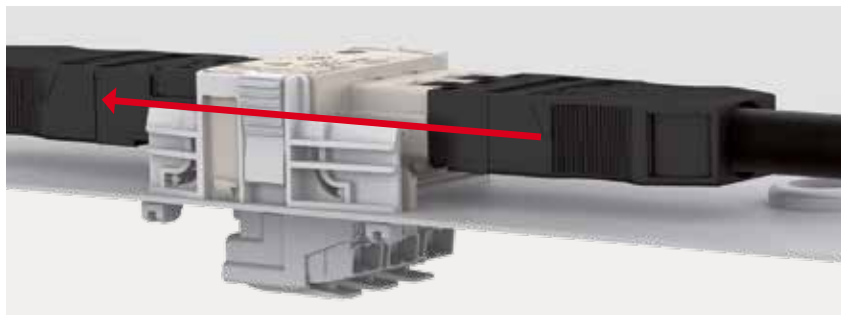
BERT FIX | ASSEMBLY MANAGER AT UNICA, THE NETHERLANDS



WHY WAGO FOR Linect® LIGHTS?

Maximum Design and Installation Reliability

Thanks to the availability of lights equipped with a Linect® interface, pluggable building installations with WINSTA® components are now even faster, safer and error-free.



Connection through the WINSTA® system up to 4 mm²/25 A

WINSTA® Linect® T-Connector for Linect® Lights

Future-proof system design:

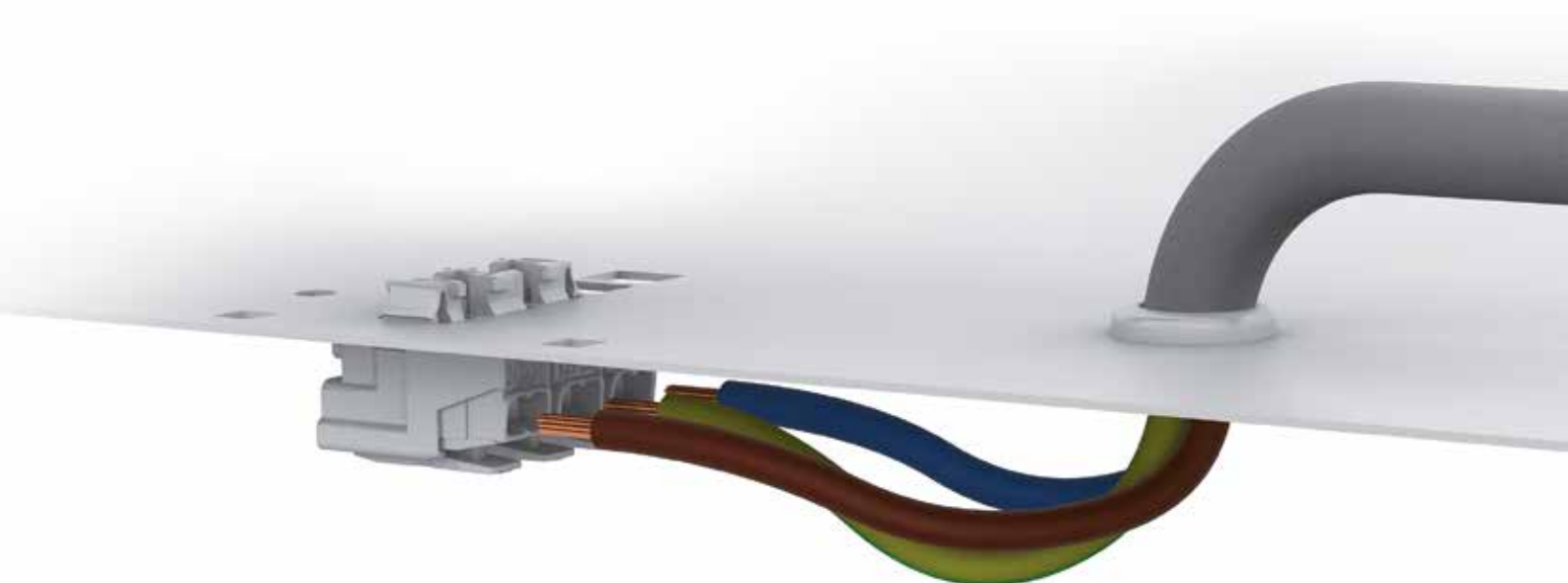
- Maximum load reserve for retrofits
- Low voltage drop over long cable runs
- Extensive WINSTA® product line provides a solution for any installation task

Installation reliability:

- 100% protection against accidental contact during installation and service
- 100% protection against mismatching for all WINSTA® components
- Fully tested cable assemblies for error-free operation

Universal Power Supply Connector for Linect®

WAGO's Linect® 294 Series Lighting Connectors allow worldwide connection of luminaires via WINSTA® pluggable connectors or conventional wiring. For a power supply connection, 2-, 3-, 4- and 5-pole connectors for solid, stranded and fine-stranded conductors up to 2.5 mm² or 12 AWG (2.0 mm Ø) are available.



Technical Data for WINSTA® Linect® T-Connectors:

250 V/4 kV/3, 400 V/6 kV/3

Nominal current: 25 A WINSTA® connection, through the light 16 A

Processing temperature: -5°C to +40°C

Continuous operating temperature: -30°C to +85°C

Appropriate WINSTA® Cable Assemblies:

X = cable length in meters, max. 20 meters

Y = 6 at 1.5 mm²/16 AWG, 7 at 2.5 mm²/14 AWG



Similar to illustration

	WINSTA® Linect® T-Connector	Item No.
	"Mains substitute", L' - N', 2-pole, gray, Coding L	770-7502 e. g., suitable for 294-8022
	"Dimming", DA+ - DA-, 2-pole, blue, Coding I	770-7102 e. g., suitable for 294-8032
	"Mains", L - PE - N, 3-pole, white, Coding A	770-6223 e. g., suitable for 294-8013
	"Emergency light", N - PE - 2/L - 1/L', 4-pole, white, Coding A	770-6224 e. g., suitable for 294-8024
	"Mains + Dimming", N - PE - L - DA- - DA+, 5-pole, blue, Coding I	770-7105 e. g., suitable for 294-8035
	"Mains substitute", N - PE - L - N' - L', 5-pole, dark gray, Coding L	770-7505 e. g., suitable for 294-8025
	"Mains", N - PE - L1 - L2 - L3, 5-pole, white, Coding A	770-6225 e. g., suitable for 294-8015

Interconnecting Cable, Socket - Plug	Cable Color	Item No.
L'/N', 2-pole, Coding L	black white	771-8982/00Y-X03 771-8982/00Y-X04
DA+ - DA-, 2-pole, Coding I	black white	771-8982/00Y-X01 771-8982/00Y-X02
L - PE - N, 3-pole, Coding A	black white	771-9993/00Y-X01 771-9993/00Y-X02
N - PE - 2/L - 1/L', 4-pole, Coding A	black white	771-9994/00Y-X01 771-9994/00Y-X02
N - PE - L - DA- - DA+, 5-pole, Coding L	black white	771-9985/00Y-X01 771-9985/00Y-X02
N - PE - L - N' - L', 5-pole, Coding L	black white	771-8985/00Y-X03 771-8985/00Y-X04
N - PE - L1 - L2 - L3, 5-pole, Coding A	black white	771-9995/00Y-X01 771-9995/00Y-X02

For approvals and bid forms, please visit: www.wago.com
Additional products are found in the WINSTA® Full Line Catalog, Volume 5, and in WAGO's online catalog.

WINSTA® Linect® T-Connectors are compatible with all 294 Series Linect® Lighting Connectors.

Order example for 3-pole cable, black, 1 m long and 1.5 mm²/16 AWG: 771-9993/006-101

	Linect® connector for conventional wiring	770-6229
--	----------------------------------------------	----------

	770-513/035-000
--	-----------------

Linect® connectors are not compatible with WINSTA® MIDI connectors. Wiring is performed in a conventional manner. Linect® connectors are compatible with the Linect® 294 Series.

Additional strain relief housings can be found in the WINSTA® Full Line Catalog, Volume 5, Section WINSTA® MIDI.

THE BUILDINGS OF TOMORROW ARE BUILT USING THE *WINSTA*[®] SYSTEM OF TODAY

Perfectly Plugged Electrical Building Installations

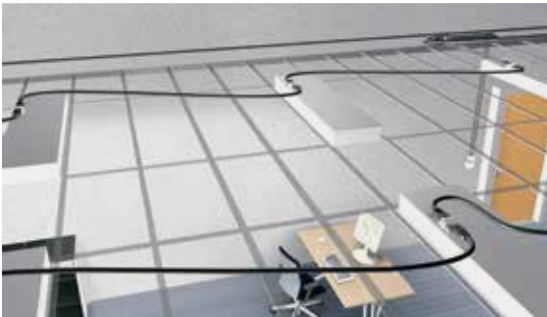


SUCCESS THROUGH EXPERTISE

Project Planning with WAGO

WAGO offers consulting and project planning services to help devise the best possible solution for your project. Our experienced team of professionals will gladly help you implement your project with our products.

Installation Examples:



In suspended ceilings



WINSTA® MINI/MINI special
0.25 ... 1.5 mm² / 16 A / 400 V



WINSTA® MIDI/MIDI special
0.5 ... 4 mm² / 25 A / 400 V



WINSTA® MIDI Linect®
0.5 ... 4 mm² / 25 A / 400 V



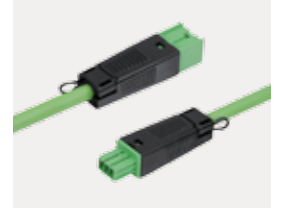
In cable ducts



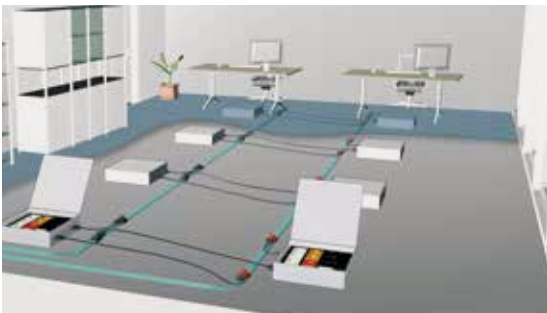
WINSTA® MAXI
0.5 ... 6 mm² / 35 A / 400 V



WINSTA® RD
1.5 and 2.5 mm² / 20 A / 250 V



WINSTA® KNX
Max. Ø 0,8 mm / 3 A / 50 V



In raised floors



WINSTA® IDC
0.5 ... 1.5 mm² / 3 A / 50 V



WINSTA® IDC
2.5 ... 16 mm² / 76 A / 400 V

Bid forms at
www.winsta-linect.com

WAGO Kontakttechnik GmbH & Co. KG

Postfach 2880 · 32385 Minden
Hansastraße 27 · 32423 Minden
info@wago.com
www.wago.com

Headquarters	+49 571/ 887 - 0
Sales	+49 571/ 887 - 222
Order Service	+49 571/ 887 - 44 333
Fax	+49 571/ 887 - 844 169

WAGO is a registered trademark of WAGO Verwaltungsgesellschaft mbH.

“Copyright – WAGO Kontakttechnik GmbH & Co. KG – all rights reserved. The content and structure of the WAGO websites, catalogs, videos, and other WAGO media are subject to copyright. Distribution or modification to the contents of these pages and videos is prohibited. Furthermore, the content may neither be copied nor made available to third parties for commercial purposes. Also subject to copyright are the images and videos that were made available to WAGO Kontakttechnik GmbH & Co. KG by third parties.”